

SCHEDULE

Time	Horry County Museum Auditorium	Horry County Museum Classroom	Bryan House	Conway City Hall	The Hut	Conway Visitor's Center (5th and Main)
10:00 a.m.	Opening Ceremony		All Day: Gullah African Diaspora Artists Show			
10:30 a.m.	Whittemore Park Middle School World Music Ensemble	Workshop Reveal, Release, Reshape: A Curriculum Model for Decolonization and Healing <i>Rhonesha Blaché and Nakeeba A. Wauchope</i>	Showcase Reconstruction 360 <i>Betsy Newman and Patrick Hayes</i> Mitchelville Tour <i>Topher Maraffi</i> Virtual Hampton <i>Sue Bergeron</i>	Golf Tourism and Sustainable Heritage <i>Gregory Pickett</i>	Center for Heirs' Property Preservation Workshop	Artisan Market and Food Trucks <i>Lucille Smith, Sweetgrass Basket Maker</i> <i>Mary Graham-Grant, Sweetgrass Basket Maker</i> <i>Jupiter Pies</i> <i>University of South Carolina Press</i> <i>The Athenaeum Press</i> <i>The Rice Museum</i> <i>Fambul Tik & More</i> — <i>Brain Freeze Desserts</i> <i>The Gumbo Machine</i> <i>Charleston Caribbean Creole Food Truck</i> <i>BJ's Krusty Krabs</i>
11:00 a.m.	Plantersville Elementary Drum Circle			Indigenous Healing: Gullah Geechee Cultural Responses <i>Fayth Parks</i>		
11:30 a.m.	Conway Middle School Band and Chorus	"Don't Ask, Won't Sell": Gullah Geechee Land in GA <i>Patrick J. Holladay</i>	African Block Printing Activities			
12:00 p.m.	Conway High School Band	Gullah Artists Presentation <i>Victoria Smalls</i>				
12:30 p.m.		Workshop Marketing the Gullah Geechee Cultural Heritage Corridor <i>Laura Mandala</i>	Genealogy Workshop <i>Patti Burns</i>			
1:00 p.m.	Becoming Harriet Tubman					
1:30 p.m.	One-Woman Performance <i>Natalie Daise</i>					
2:00 p.m.	Friendship Missionary Baptist Church and Mason Temple Youth Choirs	Doll Making Workshop <i>Zenobia Washington</i>	Current Practices with Gullah Geechee Artifacts <i>David Palmer</i>		Discovering Dave Film with Q+A <i>George Wingard</i>	
2:30 p.m.		Doll Making Workshop <i>Zenobia Washington</i>				
3:00 p.m.	Affairs of Our Ancestors Staged Play Reading <i>Benedict College</i>	Understanding Pottery: Colonoware <i>Jon Marcoux and Corey Ames Heyward</i>			Sierra Leone's <i>Shuku Blais</i> and Sweetgrass Baskets <i>Amadu Massally</i>	Artisan Market
3:30 p.m.						
4:00 p.m.	Closing Gospel Sing Bethel AME Church, Britton's Neck, Young Adult Choir					
4:30 p.m.						

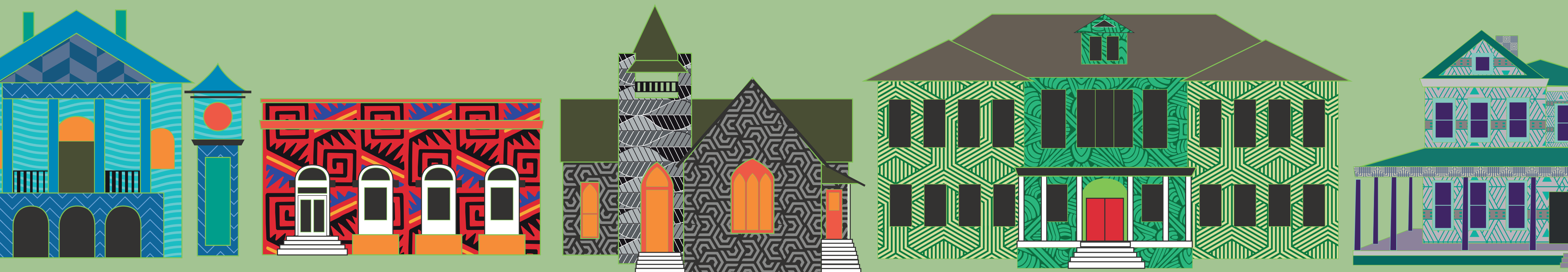
GULLAH GEECHEE COMMUNITY DAY

MUSIC + FOOD + PERFORMANCES + HISTORY

MARCH 7

10 A.M. to 4 P.M.

DOWNTOWN CONWAY



This event and the IGGAD conference is generously sponsored by



GAYLORD AND DOROTHY DONNELLEY FOUNDATION

Organized by



WITHOUT BORDERS

International Gullah Geechee and African Diaspora Conference 2020